

2014 EDITION

# CLE ELUM RANGER DISTRICT OFF ROAD VEHICLE MAP OKANOGAN AND WENATCHEE NATIONAL FORESTS



PROTECT • MAINTAIN • PRESERVE



published by: Discover Your Northwest • 164, South Jackson Street, Seattle, WA 98104,  
[discovernw.org/orvmap](http://discovernw.org/orvmap)


# Legend

## Roads

-  Freeway
-  US Highway
-  State Routes
-  USFS & County
-  State-Managed Green Dot Road

 Rivers

 Lakes

 Mixed Use -  
Open to non-street legal vehicles





## Management Type

 Area Closed to ORV







 Special Management Area

 Cities

## Trail Classification

-  Closed to Motorized Vehicles
-  Jeep/ATV
-  Motor Cycle
-  ATV

## Map Features

-  Campgrounds
-  Railroads
-  500 Ft Contours
-  Power Lines
-  County Boundary
-  Range & Township

## Land Ownership

 National Forest

 Wilderness Areas

 WA Dept. of Natural Resources

 WA Dept of Wildlife

 State Park

 Private

Non-Street Legal Vehicles Are Not Allowed On USFS Road unless otherwise posted. Roads open to mixed use are highlighted in yellow on this ORV map.

ORV Trailheads that require a Northwest Forest Pass include  
**Taneum Junction, Rider's Campground, Manastash Campground, Manastash Trailhead, Miller/Bear, DeRoux, and Ken Wilcox.**

## Table Mountain Management Area

The area delineated on this map including all roads and trails, is closed to all motorized use except snowmobiles between October 15 and June 15, with the following exceptions (these roads that remain open will be marked with a green diamond):

<b>ROADS</b>	<b>#35</b>	<b>3517</b>	<b>3521</b>
	<b>3500124</b>	<b>3517111</b>	<b>3530</b>
	<b>3500125</b>	<b>3517112</b>	<b>3530115</b>
	<b>3507</b>	<b>3517113</b>	<b>9712</b>



**CAMPING** Limited to within 100 feet of above listed roads (October 15 through June 15).



### Mudding is Illegal!

“We do not inherit the earth from our Ancestors, we borrow it from our children.”

“Mudding” is an activity done by people in motorized vehicles. They find a wet meadow, field, stream, or lakeshore to drive their vehicles and spin their tires in such a manner as to throw mud, ripping up vegetation and soil and creating deep mud holes. The object is to test the power of their vehicles and get their rigs as muddy as possible, all in the pursuit of fun. But at what cost?

Mudding Causes –

CLOSURES on public and private lands! We all pay the price for the actions of a few lawbreakers!

UGLY DAMAGE to vegetation and wetlands that may take years to heal.

YOUR TAX DOLLARS to be spent on temporary repairs to stop additional damage, diverting money that could be put to more beneficial uses – like trail maintenance and upkeep.

THE RESPONSIBLE OFF-ROAD VEHICLE USERS to get a BUM RAP! It hurts your sport!

Would you allow this in your backyard? Every citizen of the United States is a part owner of our National Forests and the valuable resources within. It is our responsibility to preserve the land for generations to come. Help us by reporting violators to the Cle Elum Ranger Station (509-852-1100) or the Kittitas County Sheriff's Office (509) 925-8534.



### The Rules Are Simple - And They Are Enforced.

Your bike must have **current ORV tags** or a license plate.

Your bike must have a USFS approved **SPARK ARRESTOR** in good working order.

You and your vehicle must be street legal to be on USFS roads (unless otherwise posted).

You must **STAY ON THE TRAIL!** Cross country travel is illegal.

You must **stay on trails designated for your vehicle** (4x4, ATV's, motorcycles, etc.)

You must be a **good neighbor**. Campgrounds are for camping, not for riding. **NO PIT RIDING!**

**Tickets are not fun for you and they are not fun to issue.** The rules are very simple. Protect your sport by following the rules.



### Wanted: A Few Good Rangers How to become involved.

Do you want to help protect, maintain, and preserve your Public Lands and the trails you enjoy? Become A USFS Volunteer.

For Information, go to [CleElumTrails.com](http://CleElumTrails.com) or e-mail - [mdouglass@fs.fed.us](mailto:mdouglass@fs.fed.us)

## **Courtesy Toward Other Recreationists**

Many types of recreationists enjoy the outdoors. This is where consideration for others takes on special meaning. Fortunately, not everyone wants to use the same space at the same time.

Some public lands are managed for a variety of uses, including recreation. Such multiple use management is possible only when various groups are cooperative and willing to share.

Most ORV enthusiasts travel forest trails for the same reasons as hikers. The main difference is the off-roader combines love for the outdoors with the joy of traveling by ORV. Off-roading compresses more trail miles into a weekend.

## **Safety**

Purchase and use the proper safety gear, including helmet, goggles, gloves and boots.

Learn the operating characteristics of your ORV.

Master driving and trail riding techniques.

Develop backcountry savvy, including compass and map use.

Learn basic first aid and CPR.

Carry extra equipment and emergency supplies if possible.

Learn how to prepare and maintain your ORV, including emergency roadside repairs.

Ride with at least one other person.

Be prepared for any weather conditions, especially in the high country.

## **KEEP YOUR AREAS CLEAN!**

*Carry out everything you carry in!*

*Don't spoil the area for others.*

**Respect private landowners and their land.**

**Respect other recreational users.**

## **Horseback Riders**

In Washington, viewing the backcountry from horseback is popular. Most horse enthusiasts willingly share forest trails with other users. But they do have problems with off-roaders not knowing how to approach or overtake horses properly on the trail. Horses have the right of way. Here are tips on trail courtesy toward horses and their riders.

Equip your machine with a properly installed and effective muffler. Horses are bothered most by excessive noise.

Pull off on the down hill side of the trail and kill your engine if approaching riders can't or don't get off the trail.

Say "Hi" as each rider in the string nears you. Otherwise, a green horse may spook when that thing seen as a stump suddenly moves.

Pass horses that have pulled off the trail only when the lead rider gives you the signal to do so.

When passing, signal how many of your group are to follow.

Don't crowd the last horse while riders are looking for a place to let you pass. A horse is more skittish about unfamiliar things approaching from the rear than from the front.



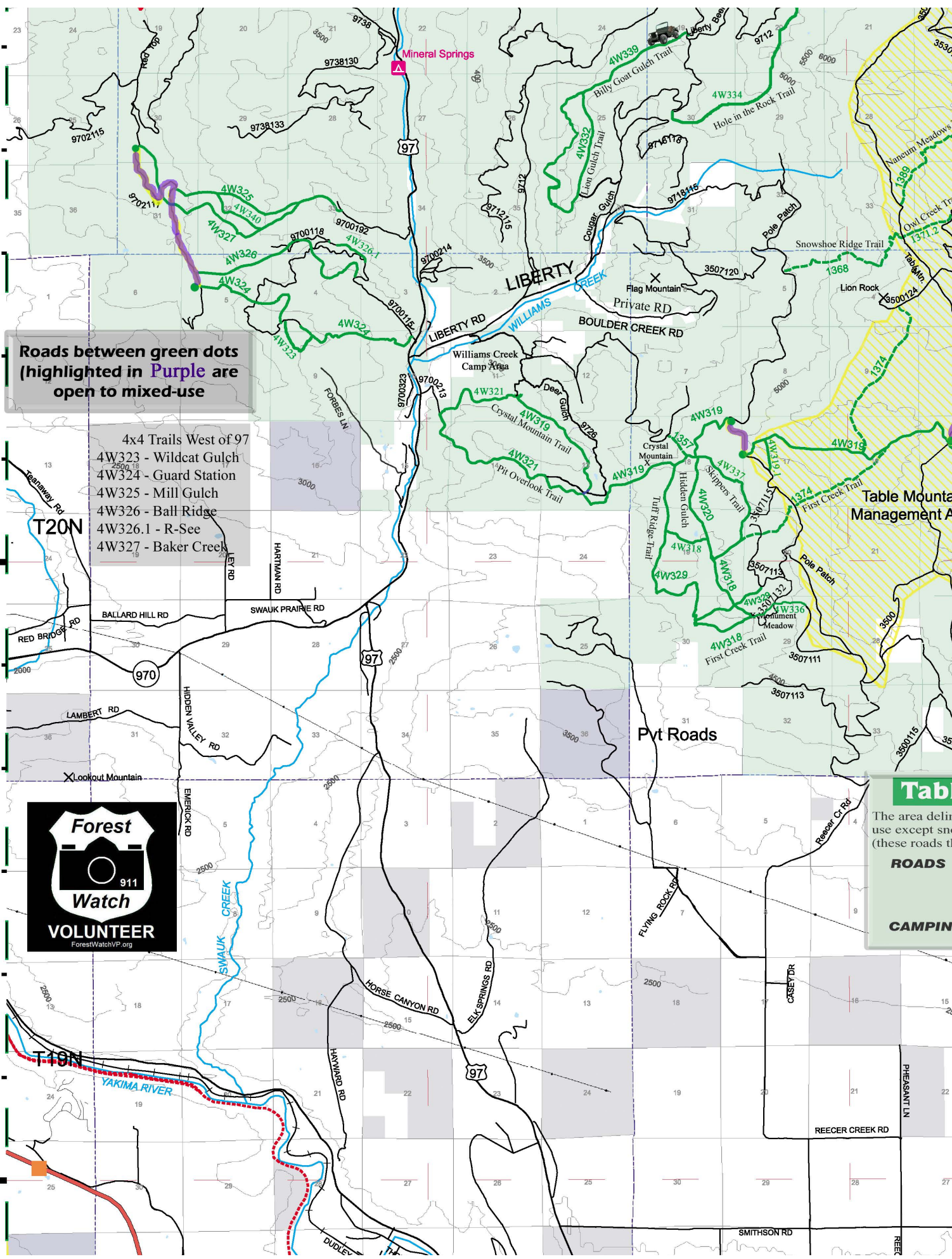
Remember! Horses and trail machines are as compatible on trails as their riders want them to be. Courtesy of Ken Wilcox, Founder, The Backcountry Horsemen of Washington.

## **Trail Conditions & Closures**

Trails can be, and often are, closed for maintenance, safety or resource damage issues, and private logging contracts. Reroutes are often offered. Know before you go by logging onto CleElumTrails.com, and please, OBEY all WARNING SIGNS!







Roads between green dots (highlighted in Purple) are open to mixed-use

- 4x4 Trails West of 97
- 4W323 - Wildcat Gulch
  - 4W324 - Guard Station
  - 4W325 - Mill Gulch
  - 4W326 - Ball Ridge
  - 4W326.1 - R-See
  - 4W327 - Baker Creek



Pvt Roads

Table Mountain Management Area

Tab

The area delir use except sno (these roads th

**ROADS**

**CAMPIN**

47°12'37"N

47°6'37"N

T20N

T18N

97

97

970

9702115

9702115

9702115

9702115

9702115

9702115

9702115

9702115

9702115

9702115

9702115

9702115

9702115

9702115

9702115

9702115

9702115

9702115

9700118

9700192

9700214

970011E

9700323

9700213

9700323

9700323

9700323

9700323

9700323

9700323

9700323

9700323

9700323

9700323

9700323

9700323

9738130

9738133

9738133

9738133

9738133

9738133

9738133

9738133

9738133

9738133

9738133

9738133

9738133

9738133

9738133

9738133

9738133

9738133

9712115

9712115

9712115

9712115

9712115

9712115

9712115

9712115

9712115

9712115

9712115

9712115

9712115

9712115

9712115

9712115

9712115

9712115

9718115

9718115

9718115

9718115

9718115

9718115

9718115

9718115

9718115

9718115

9718115

9718115

9718115

9718115

9718115

9718115

9718115

9718115

9712115

9712115

9712115

9712115

9712115

9712115

9712115

9712115

9712115

9712115

9712115

9712115

9712115

9712115

9712115

9712115

9712115

9712115

9718115

9718115

9718115

9718115

9718115

9718115

9718115

9718115

9718115

9718115

9718115

9718115

9718115

9718115

9718115

9718115

9718115

9718115

9712115

9712115

9712115

9712115

9712115

9712115

9712115

9712115

9712115

9712115

9712115

9712115

9712115

9712115

9712115

9712115

9712115

9712115

9718115

9718115

9718115

9718115

9718115

9718115

9718115

9718115

9718115

9718115

9718115

9718115

9718115

9718115

9718115

9718115

9718115

9718115

9712115

9712115

9712115

9712115

9712115

9712115

9712115

9712115

9712115

9712115

9712115

9712115

9712115

9712115

9712115

9712115

9712115

9712115

9718115

9718115

9718115

9718115

9718115

9718115

9718115

9718115

9718115

9718115

9718115

9718115

9718115

9718115

9718115

9718115

9718115

9718115

9712115

9712115

9712115

9712115

9712115

9712115

9712115

9712115

9712115

9712115

9712115

9712115

9712115

9712115

9712115

9712115

9712115

9712115

9718115

9718115

9718115

9718115

9718115

9718115

9718115

9718115

9718115

9718115

9718115

9718115

9718115

9718115

9718115

9718115

9718115

9718115

9712115

9712115

9712115

9712115

9712115

9712115

9712115

9712115

9712115

9712115

9712115

9712115

9712115

9712115

9712115

9712115

9712115

9712115

9718115

9718115

9718115

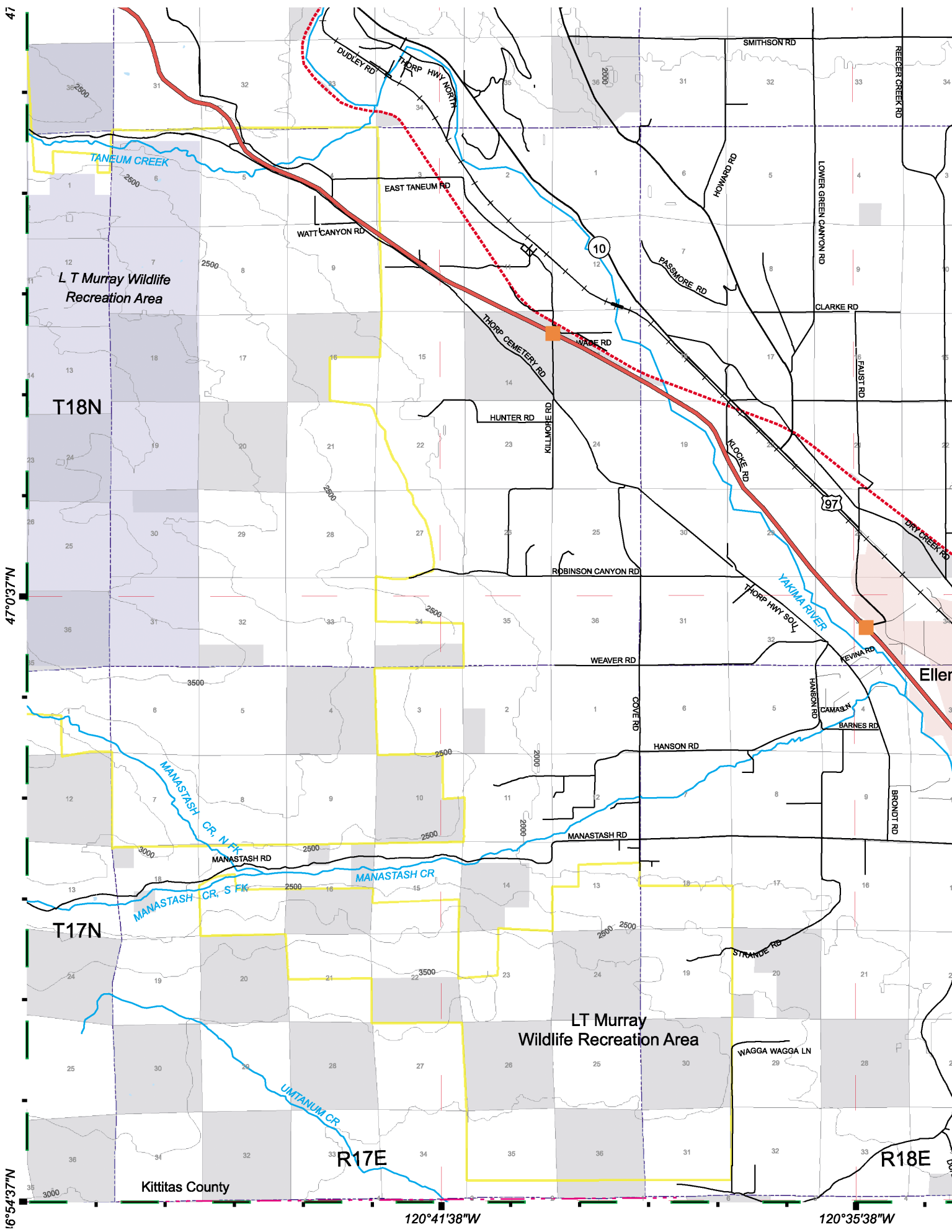
9718115

9718115

9718115

9718115

9718115



47

47°0'37"N

16°54'37"N

L T Murray Wildlife Recreation Area

T18N

T17N

LT Murray Wildlife Recreation Area

R17E

R18E

Kittitas County

DUM

120°41'38"W

120°35'38"W

SMITHSON RD

REGER CREEK RD

TANEUM CREEK

WATT CANYON RD

EAST TANEUM RD

THORP HWY NORTH

THORP CEMETERY RD

MADE RD

HUNTER RD

KILLMOHE RD

ROBINSON CANYON RD

WEAVER RD

COVE RD

HANSON RD

MANASTASH RD

MANASTASH CR. N FK

MANASTASH CR. S FK

MANASTASH CR

MANASTASH RD

THORP HWY SCL

YAKIMA RIVER

THORP HWY SCL

REVINA RD

HANSON RD

CAMAS LN

BARNES RD

STRANDE RD

WAGGA WAGGA LN

BRONDT RD

Ellers

10

97

31

32

33

34

35

36

37

38

39

40

41

42

43

44

45

46

47

48

49

50

51

52

53

54

55

56

57

58

59

60

61

62

63

64

65

66

67

68

69

70

71

72

73

74

75

76

77

78

79

80

81

82

83

84

85

86

87

88

89

90

91

92

93

94

95

96

97

98

99

100

101

102

103

104

105

106

107

108

109

110

111

112

113

114

115

116

117

118

119

120

121

122

123

124

125

126

127

128

129

130

131

132

133

134

135

136

137

138

139

140

141

142

143

144

145

146

147

148

149

150

151

152

153

154

155

156

157

158

159

160

161

162

163

164

165

166

167

168

169

170

171

172

173

174

175

176

177

178

179

180

181

182

183

184

185

186

187

188

189

190

191

192

193

194

195

196

197

198

199

200

201

202

203

204

205

206

207

208

209

210

211

212

213

214

215

216

217

218

219

220

221

222

223

224

225

226

227

228

229

230

231

232

233

234

235

236

237

238

239

240

241

242

243

244

245

246

247

248

249

250

251

252

253

254

255

256

257

258

259

260

261

262

263

264

265

266

267

268

269

270

271

272

273

274

275

276

277

278

279

280

281

282

283

284

285

286

287

288

289

290

291

292

293

294

295

296

297

298

299

300

301

302

303

304

305

306

307

308

309

310

311

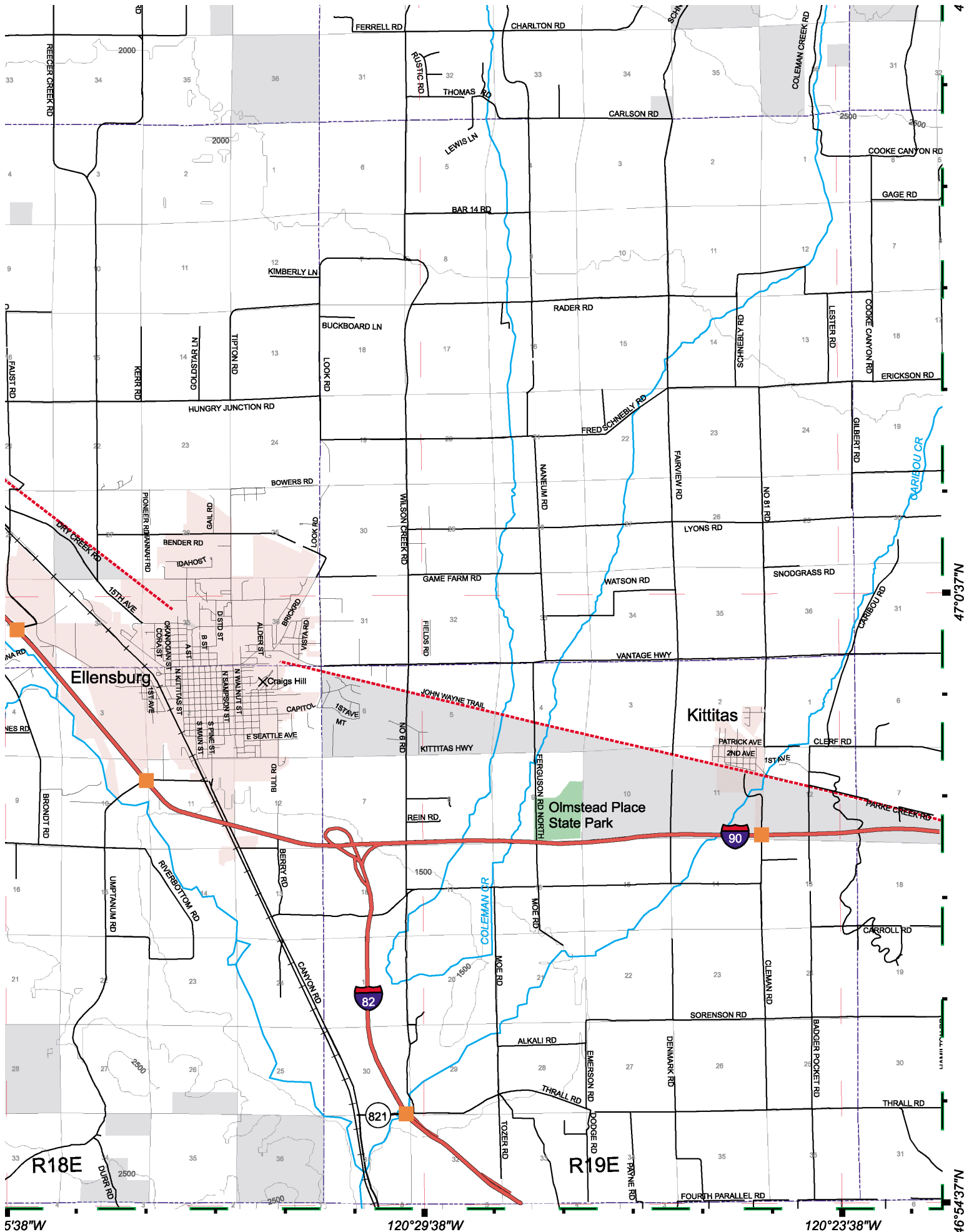
312

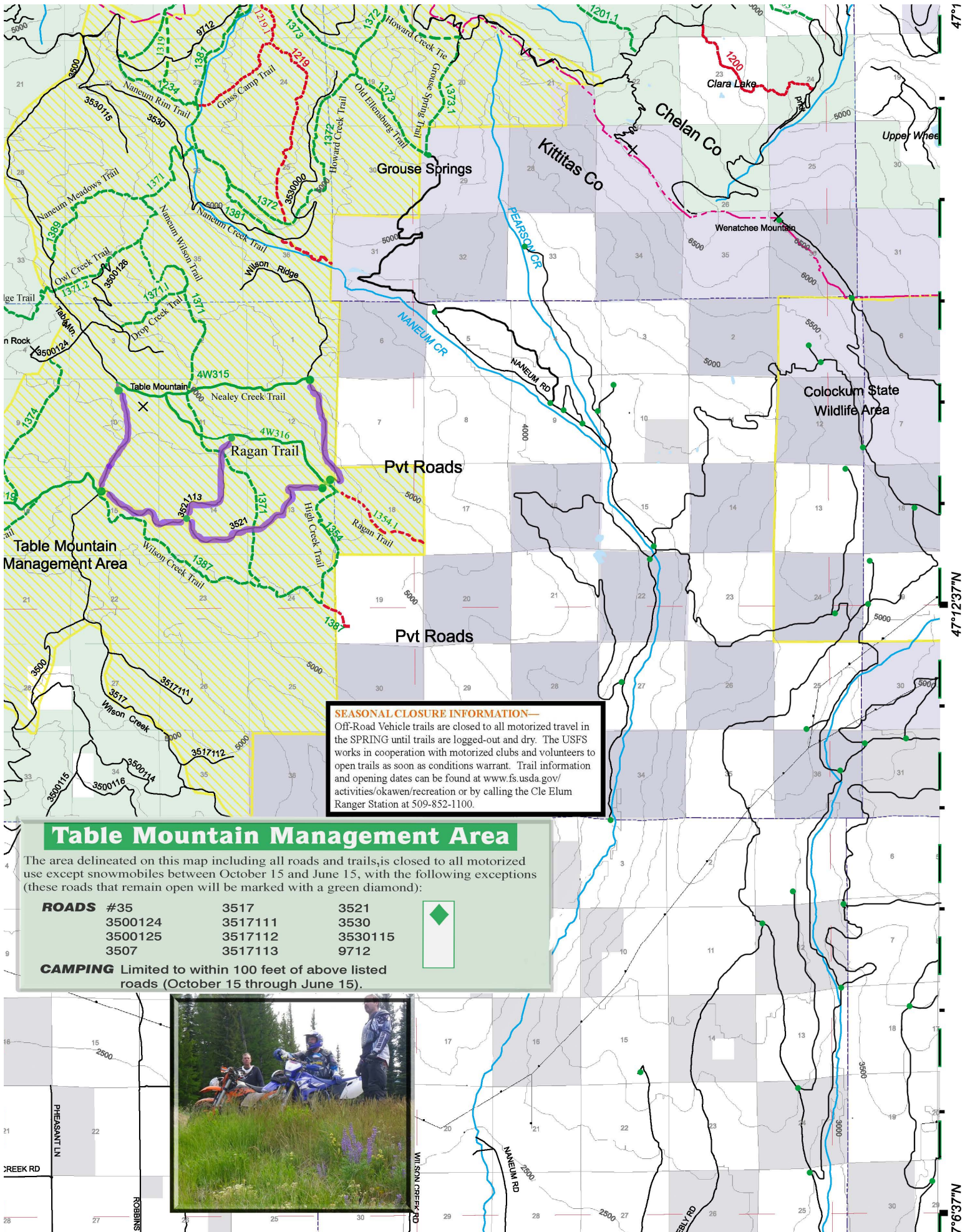
313

314

315







**SEASONAL CLOSURE INFORMATION—**  
 Off-Road Vehicle trails are closed to all motorized travel in the SPRING until trails are logged-out and dry. The USFS works in cooperation with motorized clubs and volunteers to open trails as soon as conditions warrant. Trail information and opening dates can be found at [www.fs.usda.gov/activities/okawen/recreation](http://www.fs.usda.gov/activities/okawen/recreation) or by calling the Cle Elum Ranger Station at 509-852-1100.

### Table Mountain Management Area

The area delineated on this map including all roads and trails, is closed to all motorized use except snowmobiles between October 15 and June 15, with the following exceptions (these roads that remain open will be marked with a green diamond):

ROADS	#35	3517	3521
	3500124	3517111	3530
	3500125	3517112	3530115
	3507	3517113	9712



**CAMPING** Limited to within 100 feet of above listed roads (October 15 through June 15).



47°1

47°12'37"N

7°6'37"W