

2014 EDITION

CLE ELUM RANGER DISTRICT OFF ROAD VEHICLE MAP OKANOGAN AND WENATCHEE NATIONAL FORESTS

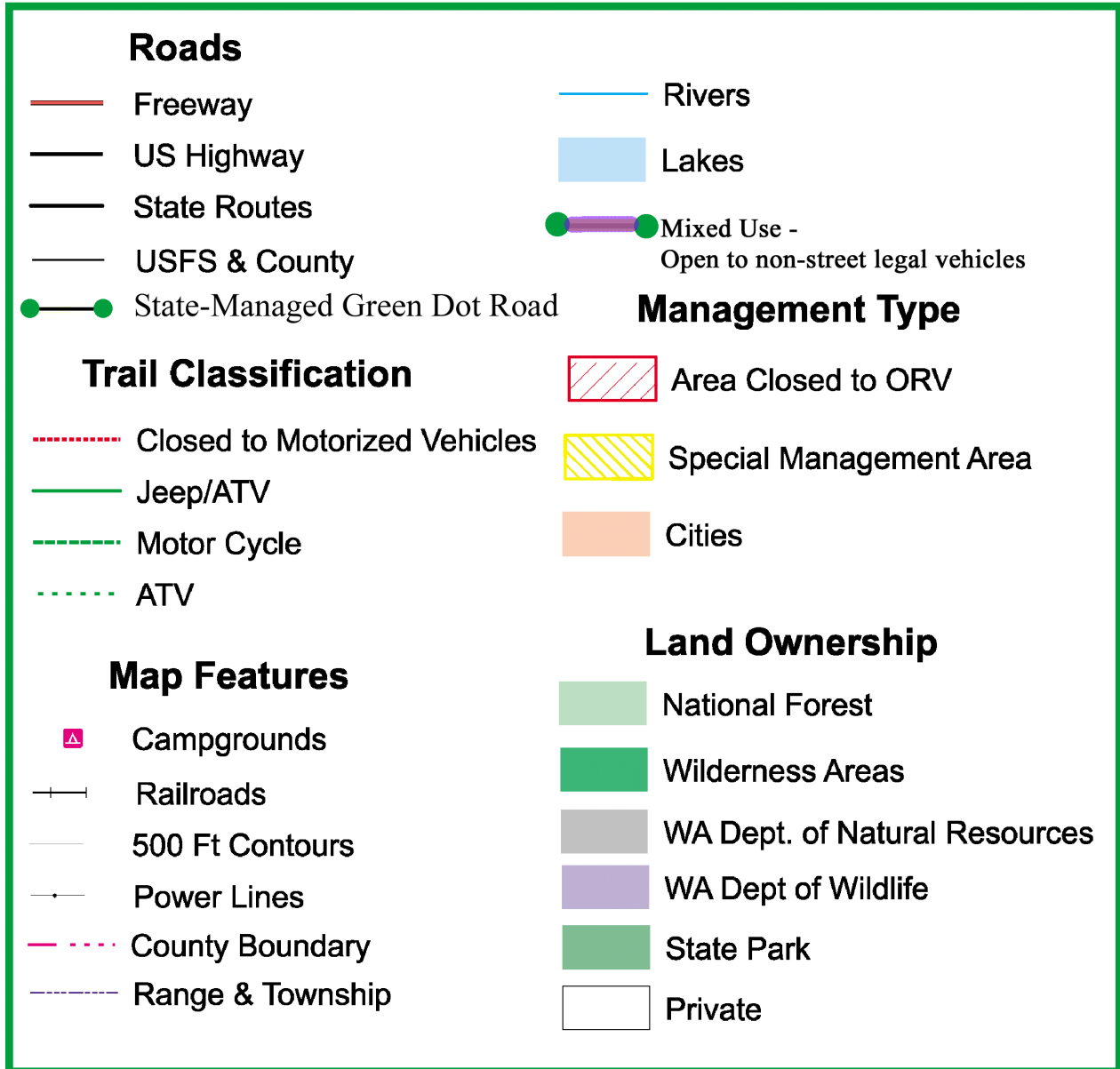


PROTECT • MAINTAIN • PRESERVE



published by: Discover Your Northwest • 164, South Jackson Street, Seattle, WA 98104,
discovernw.org/orvmap

Legend



Non-Street Legal Vehicles Are Not Allowed On USFS Road unless otherwise posted. Roads open to mixed use are highlighted in yellow on this ORV map.

ORV Trailheads that require a Northwest Forest Pass include
Taneum Junction, Rider's Campground, Manastash Campground, Manastash Trailhead, Miller/Bear, DeRoux, and Ken Wilcox.

Table Mountain Management Area

The area delineated on this map including all roads and trails, is closed to all motorized use except snowmobiles between October 15 and June 15, with the following exceptions (these roads that remain open will be marked with a green diamond):

ROADS	#35	3517	3521
	3500124	3517111	3530
	3500125	3517112	3530115
	3507	3517113	9712



CAMPING Limited to within 100 feet of above listed roads (October 15 through June 15).



Mudding is Illegal!

“We do not inherit the earth from our Ancestors, we borrow it from our children.”

“Mudding” is an activity done by people in motorized vehicles. They find a wet meadow, field, stream, or lakeshore to drive their vehicles and spin their tires in such a manner as to throw mud, ripping up vegetation and soil and creating deep mud holes. The object is to test the power of their vehicles and get their rigs as muddy as possible, all in the pursuit of fun. But at what cost?

Mudding Causes –

CLOSURES on public and private lands! We all pay the price for the actions of a few lawbreakers!

UGLY DAMAGE to vegetation and wetlands that may take years to heal.

YOUR TAX DOLLARS to be spent on temporary repairs to stop additional damage, diverting money that could be put to more beneficial uses – like trail maintenance and upkeep.

THE RESPONSIBLE OFF-ROAD VEHICLE USERS to get a BUM RAP! It hurts your sport!

Would you allow this in your backyard? Every citizen of the United States is a part owner of our National Forests and the valuable resources within. It is our responsibility to preserve the land for generations to come. Help us by reporting violators to the Cle Elum Ranger Station (509-852-1100) or the Kittitas County Sheriff's Office (509) 925-8534.



The Rules Are Simple - And They Are Enforced.

Your bike must have **current ORV tags** or a license plate.

Your bike must have a USFS approved **SPARK ARRESTOR** in good working order.

You and your vehicle must be street legal to be on USFS roads (unless otherwise posted).

You must **STAY ON THE TRAIL!** Cross country travel is illegal.

You must **stay on trails designated for your vehicle** (4x4, ATV's, motorcycles, etc.)

You must be a **good neighbor**. Campgrounds are for camping, not for riding. **NO PIT RIDING!**

Tickets are not fun for you and they are not fun to issue. The rules are very simple. Protect your sport by following the rules.



Wanted: A Few Good Rangers How to become involved.

Do you want to help protect, maintain, and preserve your Public Lands and the trails you enjoy? Become A USFS Volunteer.

For Information, go to CleElumTrails.com or e-mail - mdouglass@fs.fed.us

Courtesy Toward Other Recreationists

Many types of recreationists enjoy the outdoors. This is where consideration for others takes on special meaning. Fortunately, not everyone wants to use the same space at the same time.

Some public lands are managed for a variety of uses, including recreation. Such multiple use management is possible only when various groups are cooperative and willing to share.

Most ORV enthusiasts travel forest trails for the same reasons as hikers. The main difference is the off-roader combines love for the outdoors with the joy of traveling by ORV. Off-roading compresses more trail miles into a weekend.

Safety

Purchase and use the proper safety gear, including helmet, goggles, gloves and boots.

Learn the operating characteristics of your ORV.

Master driving and trail riding techniques.

Develop backcountry savvy, including compass and map use.

Learn basic first aid and CPR.

Carry extra equipment and emergency supplies if possible.

Learn how to prepare and maintain your ORV, including emergency roadside repairs.

Ride with at least one other person.

Be prepared for any weather conditions, especially in the high country.

KEEP YOUR AREAS CLEAN!

Carry out everything you carry in!

Don't spoil the area for others.

Respect private landowners and their land.

Respect other recreational users.

Horseback Riders

In Washington, viewing the backcountry from horseback is popular. Most horse enthusiasts willingly share forest trails with other users. But they do have problems with off-roaders not knowing how to approach or overtake horses properly on the trail. Horses have the right of way. Here are tips on trail courtesy toward horses and their riders.

Equip your machine with a properly installed and effective muffler. Horses are bothered most by excessive noise.

Pull off on the down hill side of the trail and kill your engine if approaching riders can't or don't get off the trail.

Say "Hi" as each rider in the string nears you. Otherwise, a green horse may spook when that thing seen as a stump suddenly moves.

Pass horses that have pulled off the trail only when the lead rider gives you the signal to do so.

When passing, signal how many of your group are to follow.

Don't crowd the last horse while riders are looking for a place to let you pass. A horse is more skittish about unfamiliar things approaching from the rear than from the front.



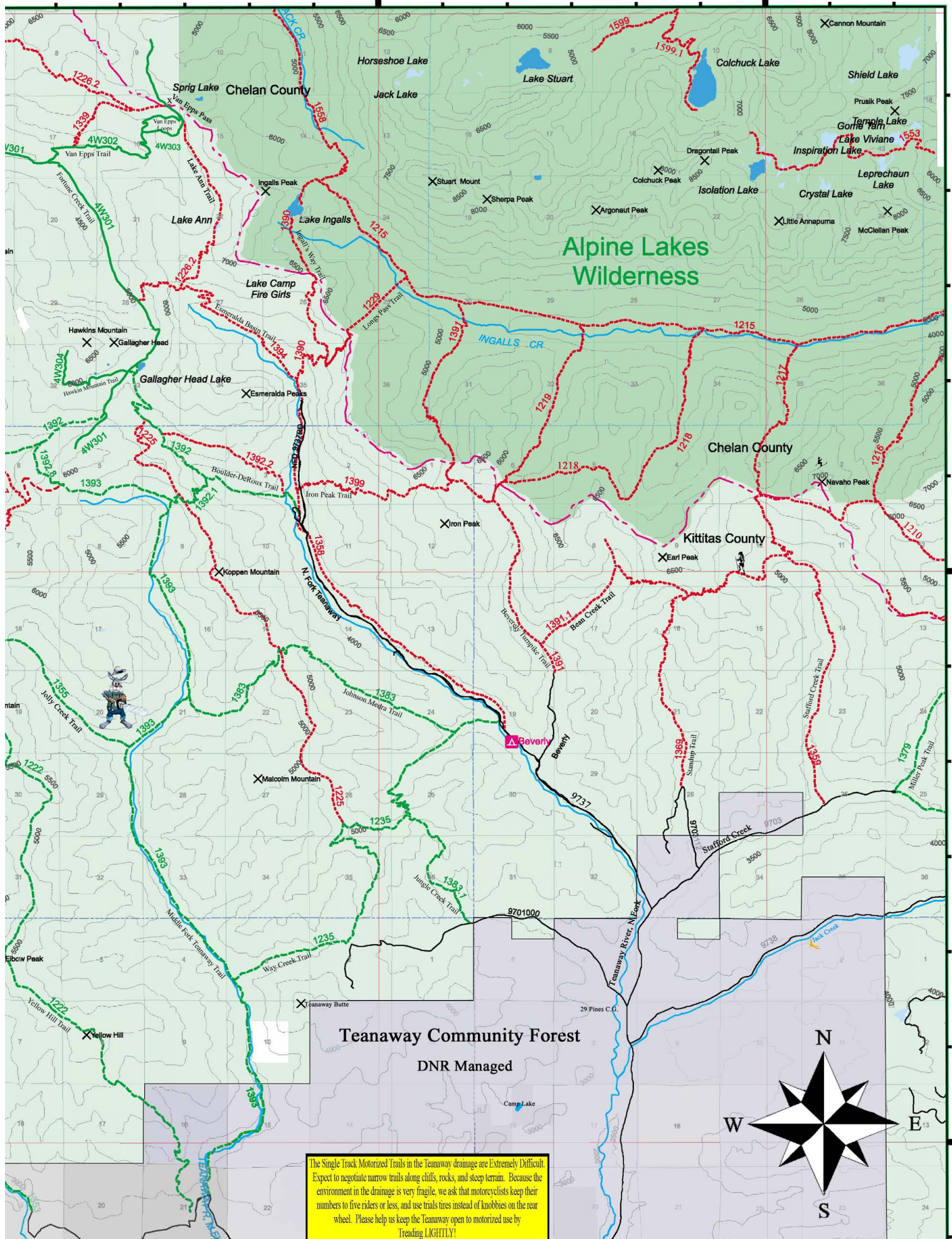
Remember! Horses and trail machines are as compatible on trails as their riders want them to be. Courtesy of Ken Wilcox, Founder, The Backcountry Horsemen of Washington.

Trail Conditions & Closures

Trails can be, and often are, closed for maintenance, safety or resource damage issues, and private logging contracts. Reroutes are often offered. Know before you go by logging onto CleElumTrails.com, and please, OBEY all WARNING SIGNS!

120°54'59"W

120°54'59"W



47°24'28"N

47°18'28"N

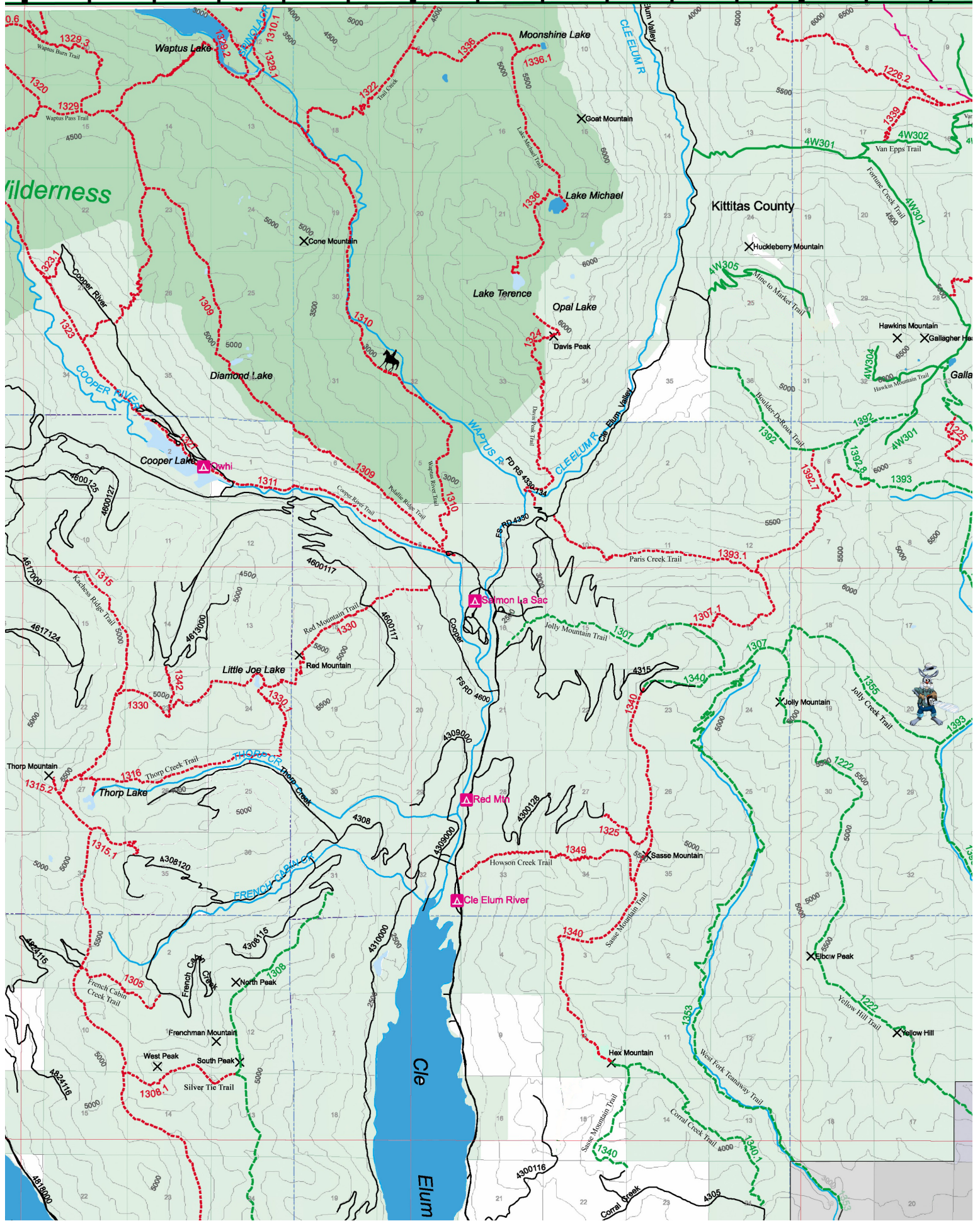


The Single Track Motorized Trails in the Teanaway drainage are Extremely Difficult. Expect to negotiate narrow trails along cliffs, rocks, and steep terrain. Because the environment in the drainage is very fragile, we ask that motorcyclists keep their numbers to five riders or less, and use trails tires instead of knobies on the rear wheel. Please help us keep the Teanaway open to motorized use by Treading LIGHTLY!

1°12'59"W

121°6'59"W

121°0'59"W



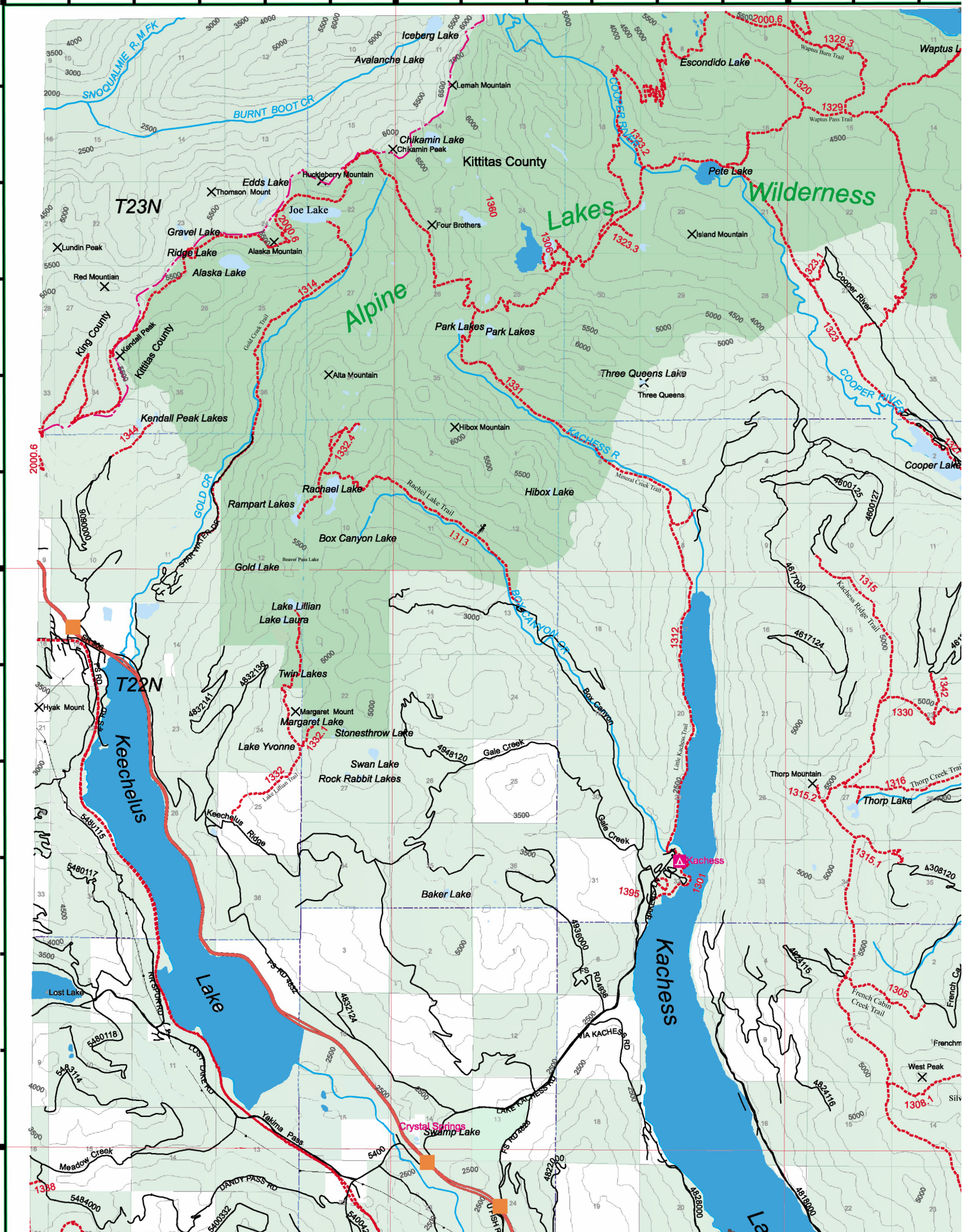
1°24'59"W

121°18'59"W

121°12'59"W

47°24'28"N

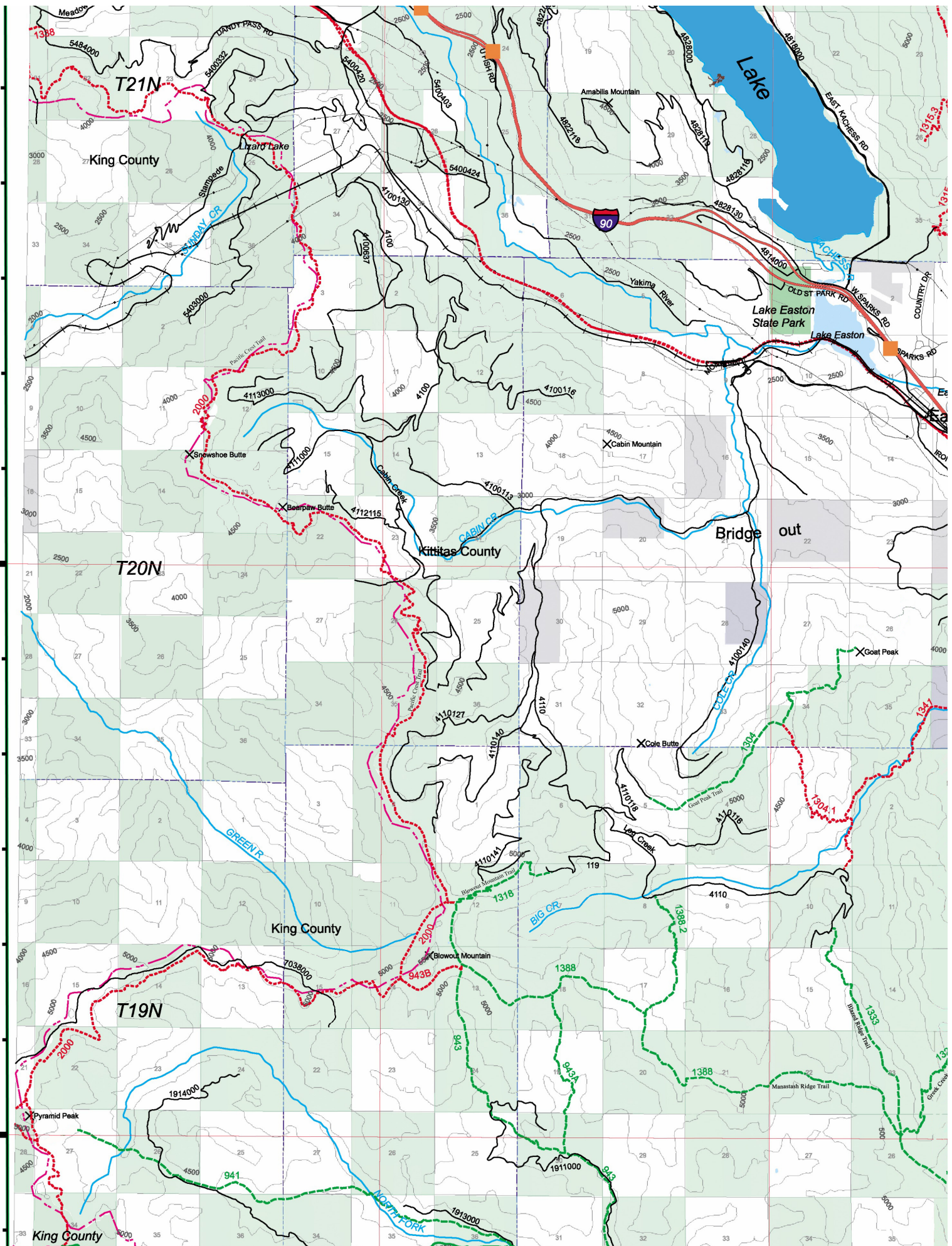
47°18'28"N

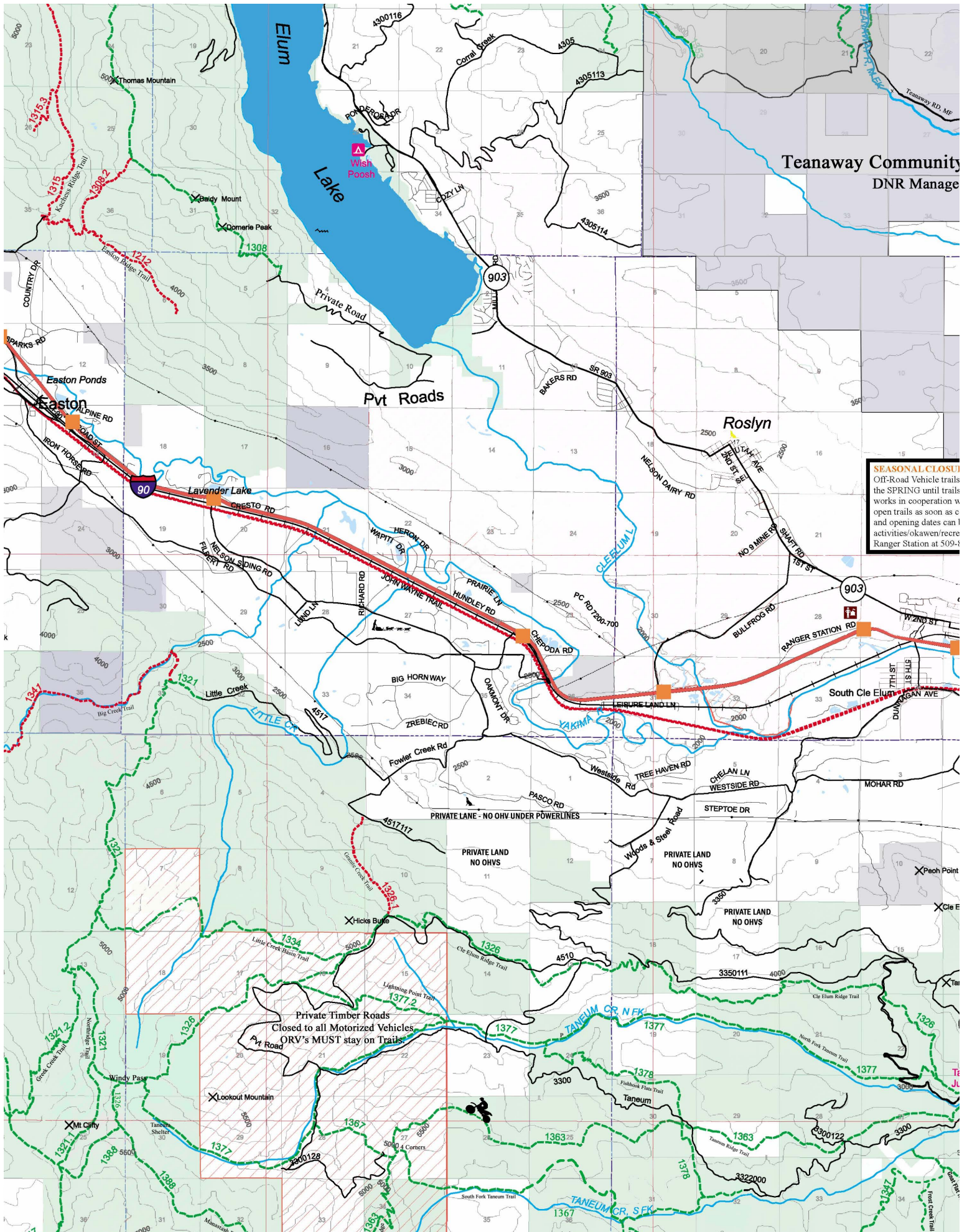


47°

47°12'28"N

47°6'28"N

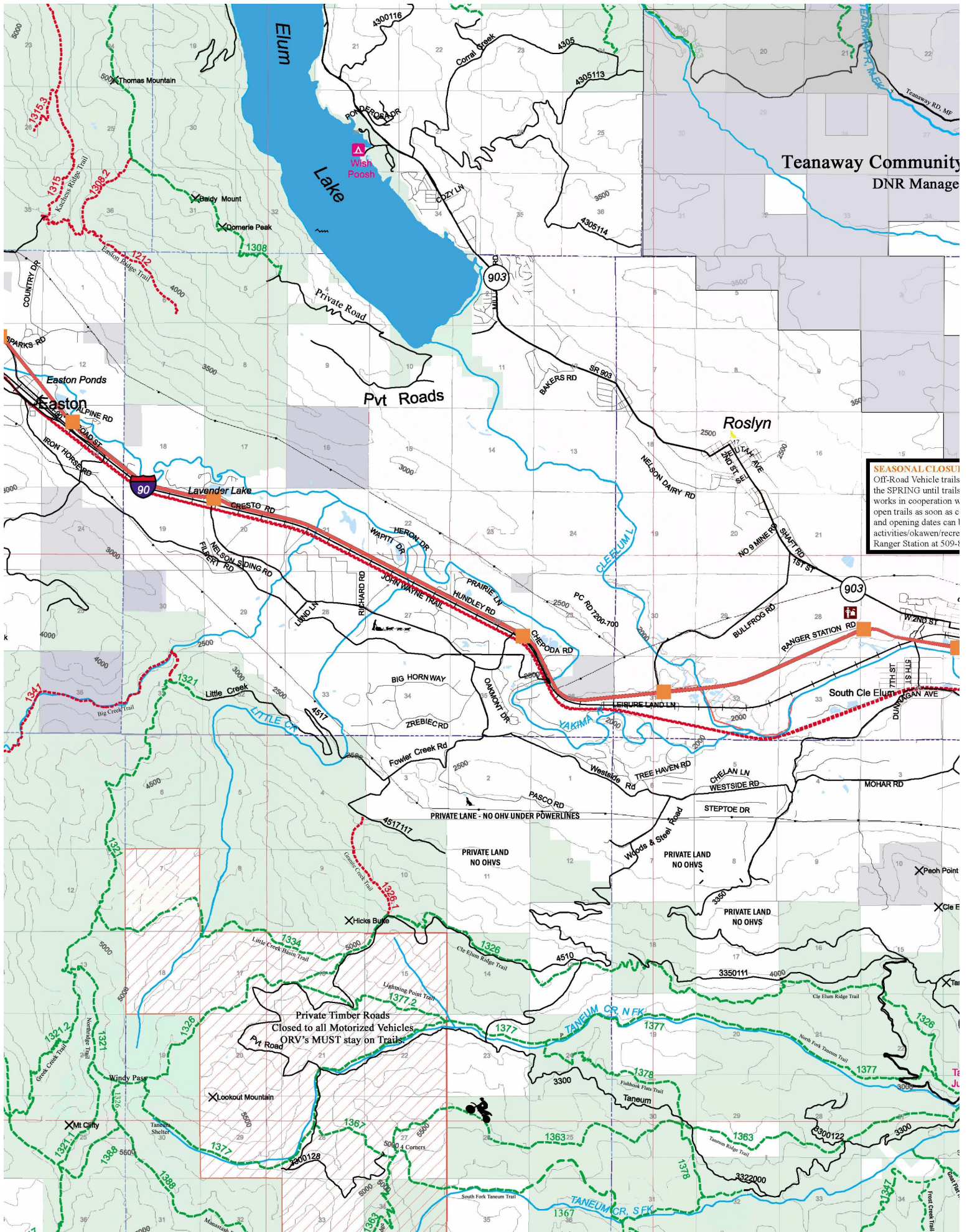




Teanaway Community
DNR Manage

SEASONAL CLOSURE
Off-Road Vehicle trails the SPRING until trails works in cooperation with open trails as soon as conditions and opening dates can be determined. Activities/okawen/recre Ranger Station at 509-1

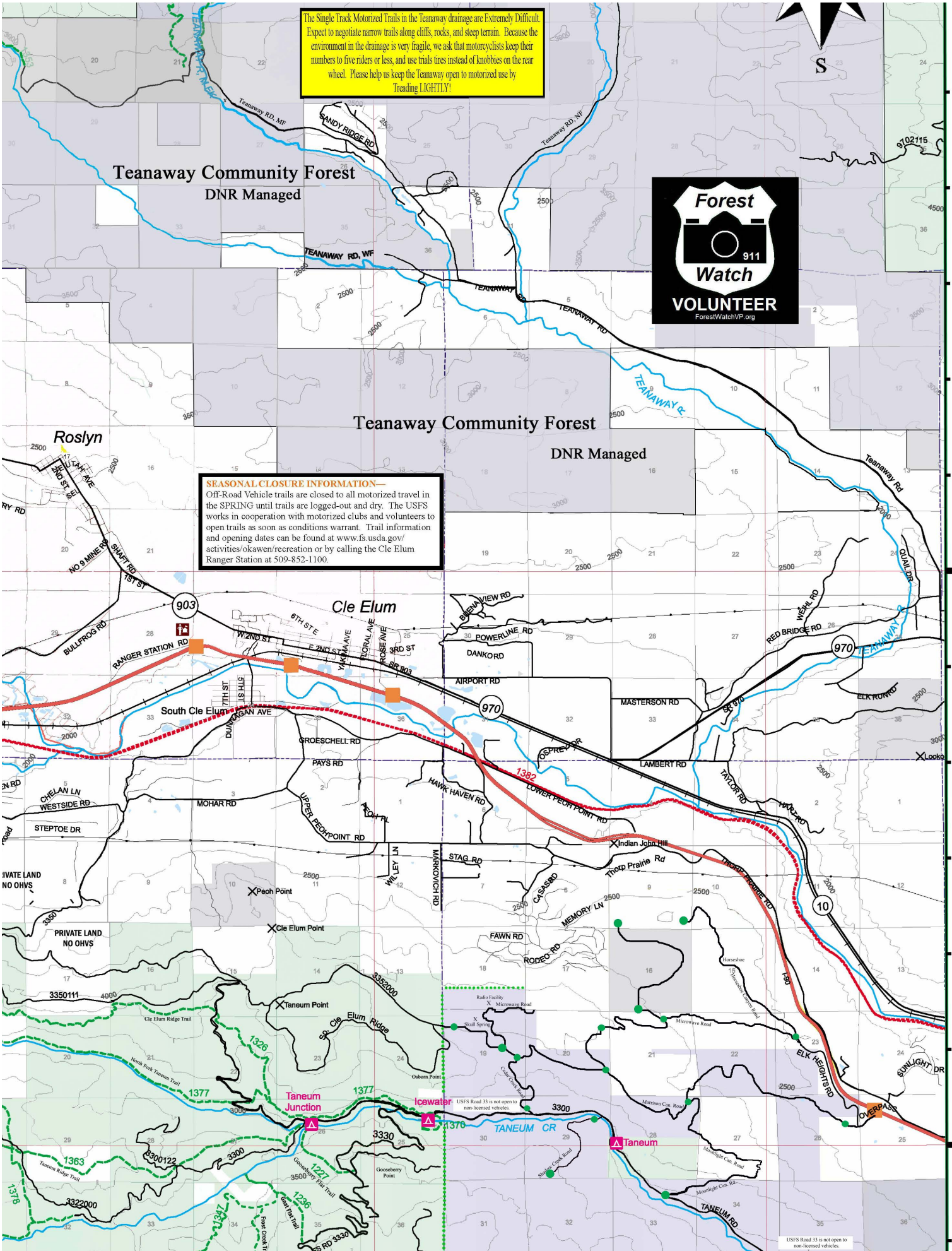
Private Timber Roads
Closed to all Motorized Vehicles
ORV's MUST stay on Trails



The Single Track Motorized Trails in the Teanaway drainage are Extremely Difficult. Expect to negotiate narrow trails along cliffs, rocks, and steep terrain. Because the environment in the drainage is very fragile, we ask that motorcyclists keep their numbers to five riders or less, and use trials tires instead of knobblies on the rear wheel. Please help us keep the Teanaway open to motorized use by Treading LIGHTLY!

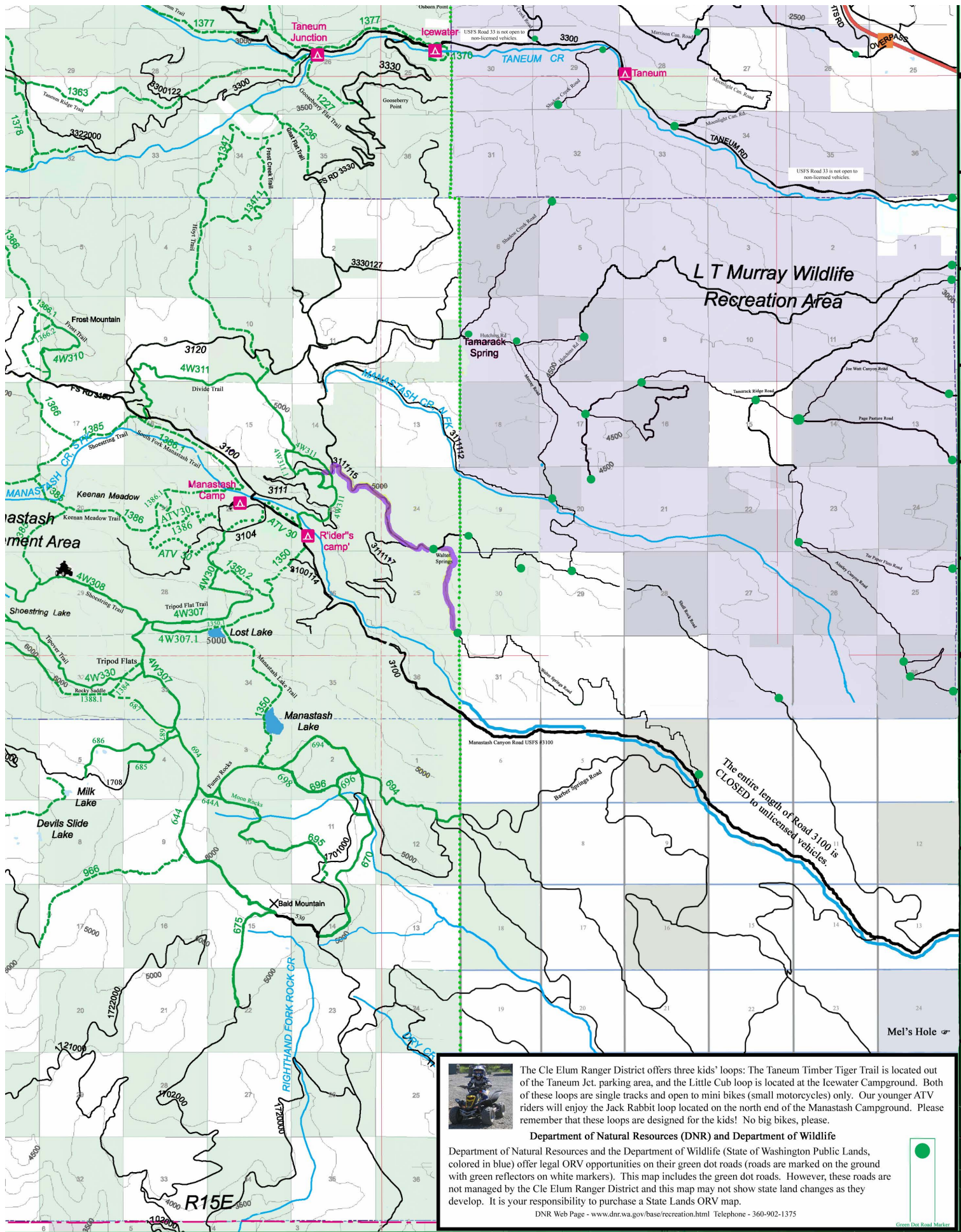


SEASONAL CLOSURE INFORMATION—
 Off-Road Vehicle trails are closed to all motorized travel in the SPRING until trails are logged-out and dry. The USFS works in cooperation with motorized clubs and volunteers to open trails as soon as conditions warrant. Trail information and opening dates can be found at www.fs.usda.gov/activities/okawen/recreation or by calling the Cle Elum Ranger Station at 509-852-1100.



USFS Road 33 is not open to non-licensed vehicles.

47°1
47°12'28"N
47°6'28"N



47°6'28"N

47°0'28"N

W

120°54'59"W

120°48'59"W



The Cle Elum Ranger District offers three kids' loops: The Taneum Timber Tiger Trail is located out of the Taneum Jct. parking area, and the Little Cub loop is located at the Icewater Campground. Both of these loops are single tracks and open to mini bikes (small motorcycles) only. Our younger ATV riders will enjoy the Jack Rabbit loop located on the north end of the Manastash Campground. Please remember that these loops are designed for the kids! No big bikes, please.

Department of Natural Resources (DNR) and Department of Wildlife

Department of Natural Resources and the Department of Wildlife (State of Washington Public Lands, colored in blue) offer legal ORV opportunities on their green dot roads (roads are marked on the ground with green reflectors on white markers). This map includes the green dot roads. However, these roads are not managed by the Cle Elum Ranger District and this map may not show state land changes as they develop. It is your responsibility to purchase a State Lands ORV map.

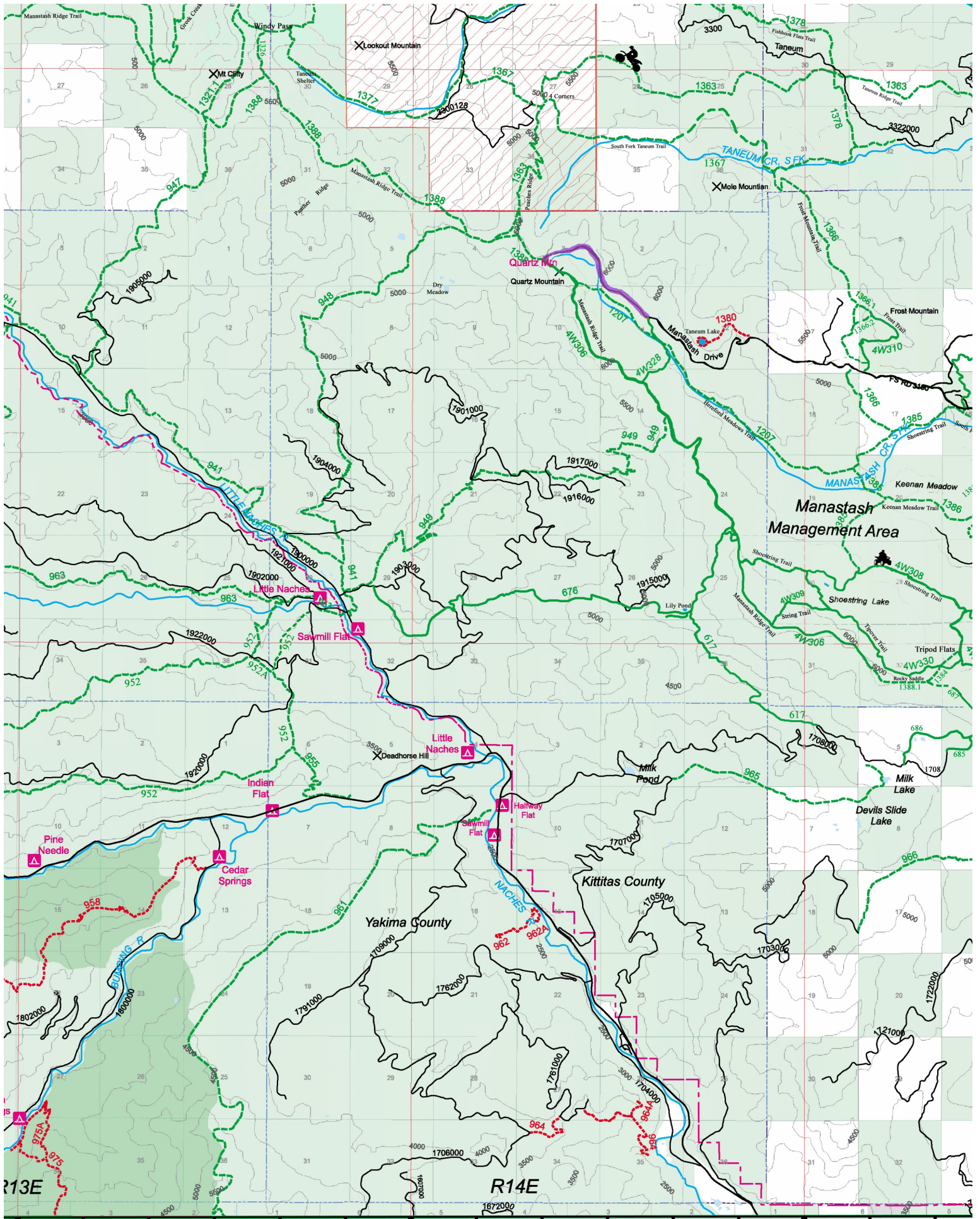
DNR Web Page - www.dnr.wa.gov/base/recreation.html Telephone - 360-902-1375



Green Dot Road Marker

The entire length of Road 3100 is CLOSED to unlicensed vehicles.

Mel's Hole



121°59'W

121°6'59"W

121°0'59"W

